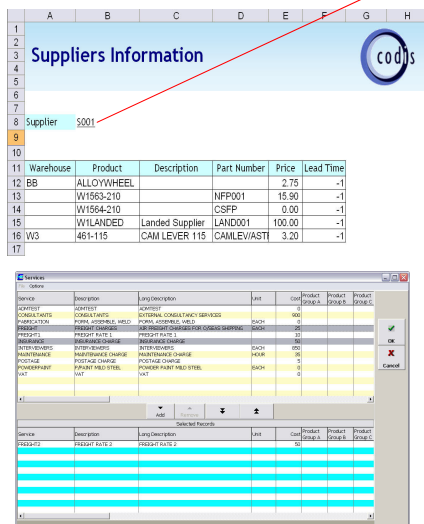
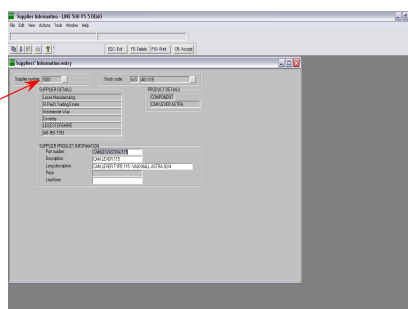
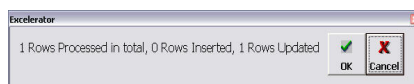


Supplier Information

The Supplier Information module has been developed using the award winning Excelerator[®] Technology. This technology allows the bi-directional, seamless integration of Excel and Sage.



Warehouse	Product	Description	Part Number	Price	Lead Time
BB	ALLOYWHEEL			2.75	-1
13	W1563-210		NFP001	15.90	-1
14	W1564-210		CSFP	0.00	-1
15	W1565-210	Landed Supplier	LAND001	100.00	-1
16	W3	461-115	CAM LEVER 115	3.20	-1



The powerful and flexible browse feature allows the user to search the Sage database for valid supplier codes and other data whilst working in Excel.

This is done by a simple right click of the mouse on the field to be looked up. The search can be based on a number of fields and can also be used to create conditional criteria for the search.

By a click of the mouse, suppliers details created in Excel update the Sage database with full control and validation that follow the Sage business rules.

“Excelerator has cut our Month end reporting time from seven days to five within the first month of implementation.”

**Brian May,
Bunzl PLC**

