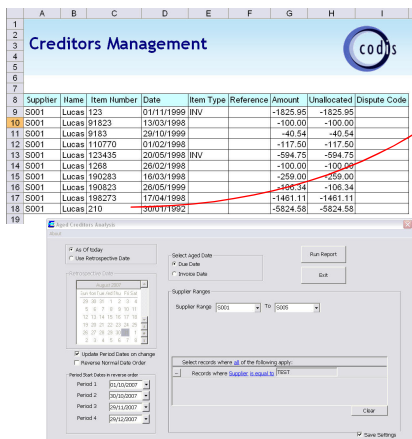


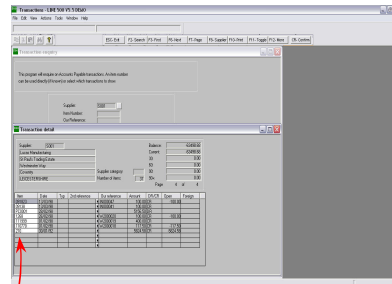
## Creditors Management

The Creditors Management module has been developed using the award winning Excelerator<sup>®</sup> Technology. This technology allows the bi-directional, seamless integration of Excel and Sage.



The screenshot shows an Excel spreadsheet titled 'Creditors Management' with columns for Supplier, Name, Item Number, Date, Item Type, Reference, Amount, and Unallocated. Below the spreadsheet is a Sage 'Creditors Management' dialog box with various search and filter options.

Supplier	Name	Item Number	Date	Item Type	Reference	Amount	Unallocated	Dispute Code
S001	Lucas	123	01/11/1999	INV		-1625.95	-1625.95	
S001	Lucas	91823	13/03/1998			-100.00	-100.00	
S001	Lucas	9183	28/10/1999			-40.54	-40.54	
S001	Lucas	110770	01/02/1998			-117.50	-117.50	
S001	Lucas	123435	20/05/1998	INV		-584.75	-584.75	
S001	Lucas	1265	26/02/1998			-100.00	-100.00	
S001	Lucas	190823	16/03/1998			-250.00	-250.00	
S001	Lucas	190823	26/05/1999			-106.34	-106.34	
S001	Lucas	198273	17/04/1998			-1481.11	-1481.11	
S001	Lucas	210	20/01/1998			-5824.58	-5824.58	



The powerful and flexible browse feature allows the user to search the Sage database for valid supplier codes and other data whilst working in Excel.

This is done by a simple right click of the mouse on the field to be looked up. The search can be based on a number of fields and can also be used to create conditional criteria for the search.

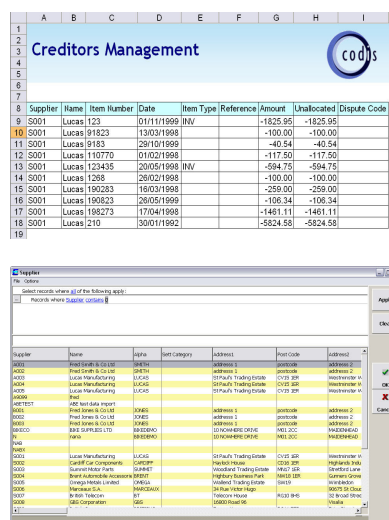
By a click of the mouse, credit control information in Excel updates the Sage database with full control and validation that follow the Sage business rules.

Excelerator has saved us hours of inputting to Sage each month thus enabling more timely reporting.

**John Silverstone,  
Overseas  
Development  
Institute**

# Key Features

The Creditors Management Excelerator® module is considered by accountants to be the interactive creditors management software.



The tool that has made significant reductions in processing times and has provided time for value added analysis and evaluation that just was not possible prior to the introduction of the software.

- Retrospective feature – see the Creditors position as it was on a previous date

- View and Update credit control information (dispute notes) directly from the spreadsheet

- Data format allows easy pivot table analysis by aged periods, region, credit-controller etc...



**Sage  
Innovation  
Award  
2006**

## Winner

**CODIS Limited**  
Tel +44 (0) 20 88 610 610 Fax +44 (0) 20 85 157 049  
Email [sales@codis.co.uk](mailto:sales@codis.co.uk) Website [www.codis.co.uk](http://www.codis.co.uk)